

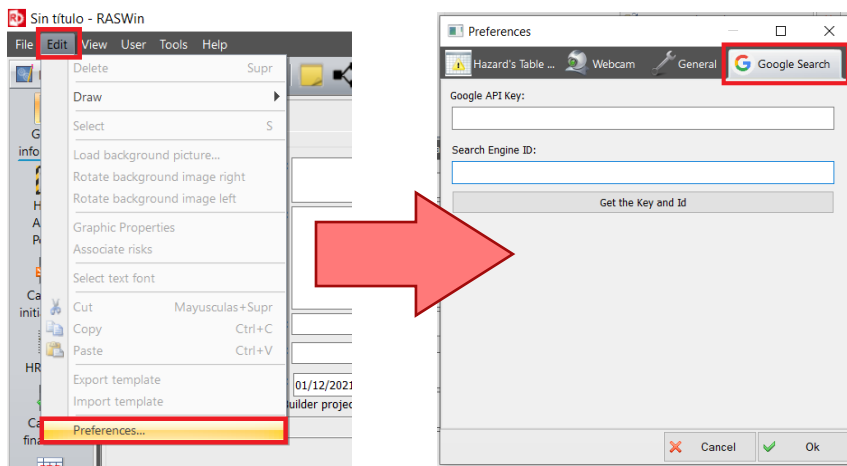


## Configure Google Search Image

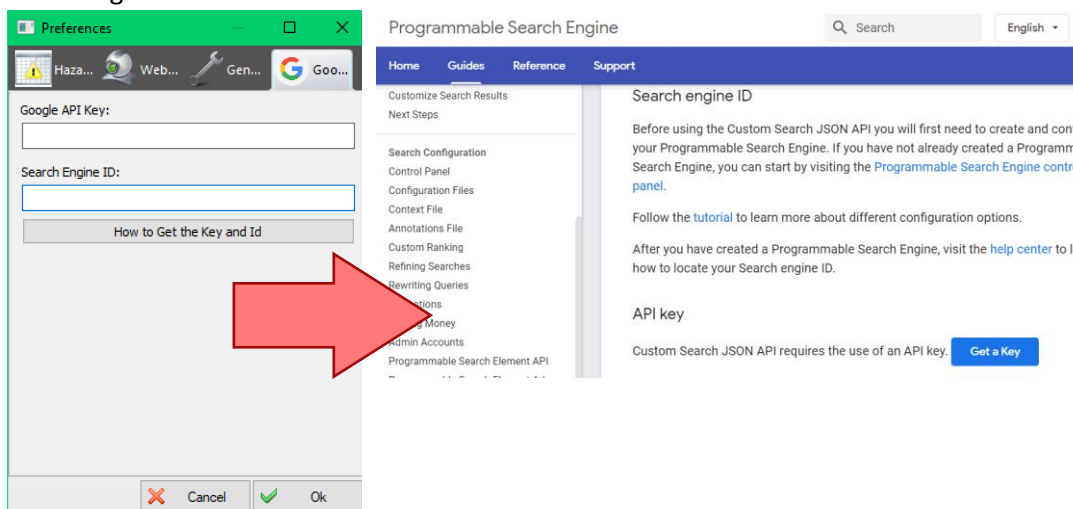
To be able to use the Google Search Image function of RASWin its necessary to configure it, the user needs a Google API Key and a Search Engine ID provided by Google otherwise the functionality its disabled.

**Limitations:** There is a limit usage of 100 image queries per day for free (imposed by Google) , if you need more queries you need to pay Google for a better plan. In any case this is not a limitation of RASWin so please be aware that if you need a high use of this feature you'll need to pay for it to google.

To begin with, within RASWin go to Edit > Preferences click on "Google Search" tab.



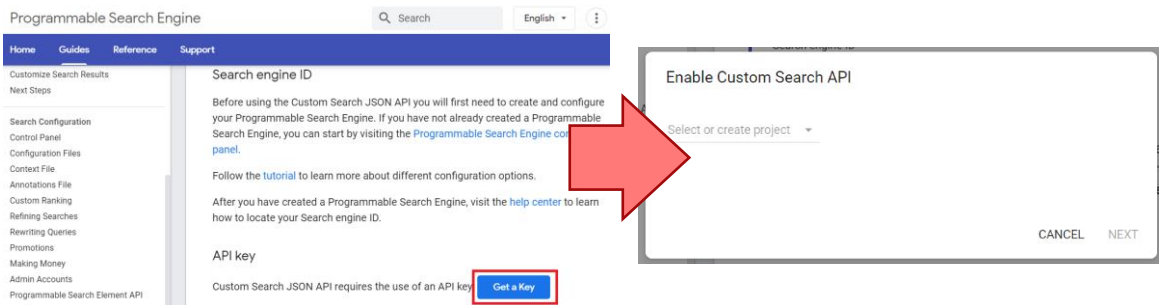
1. The current API and search engine ID is empty, click on the button "How to get the Key and Id" and that will open a web page where user can obtain the API Key and configure the Search Engine.



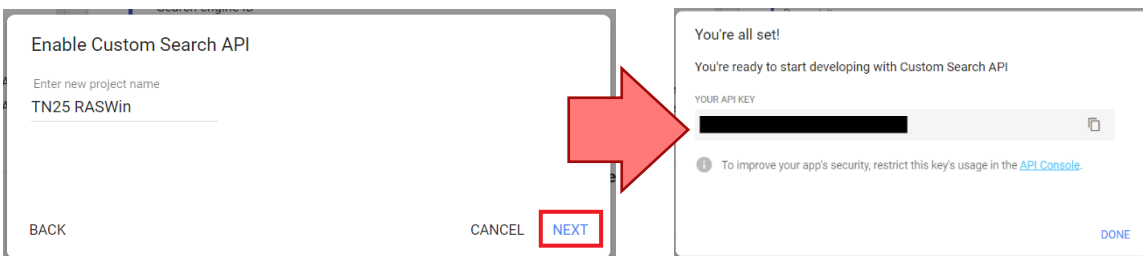


## Get API Key

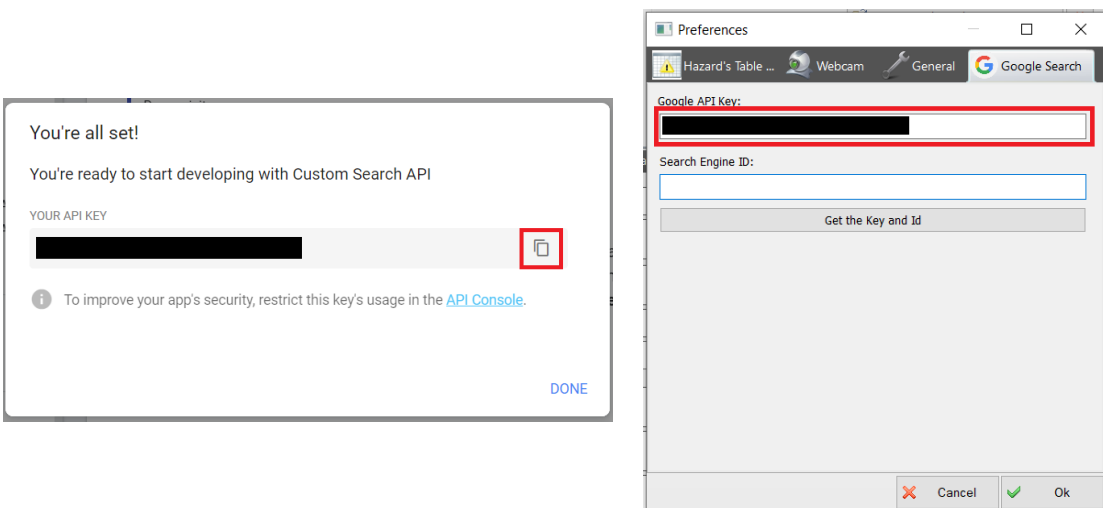
1. Now click on blue button "Get a Key", the "Enable Custom Search API" window will open.



2. In that window, select or create a new project and press Next, and it will give us the key.



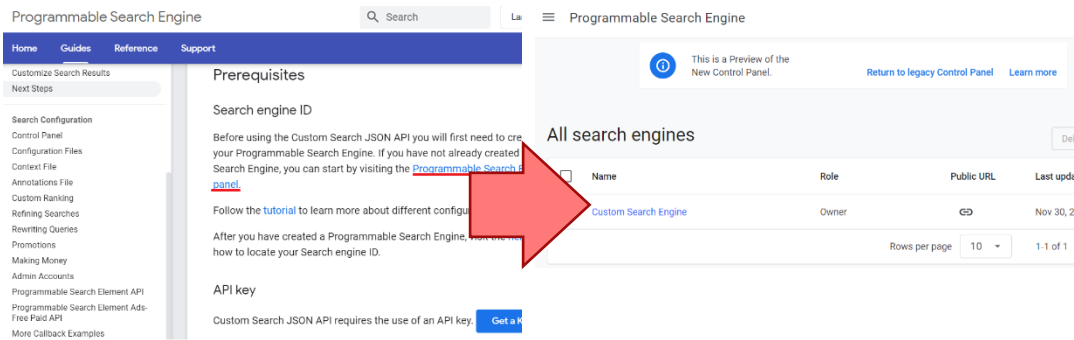
3. Copy the API Key and paste it into our RASWin configuration.



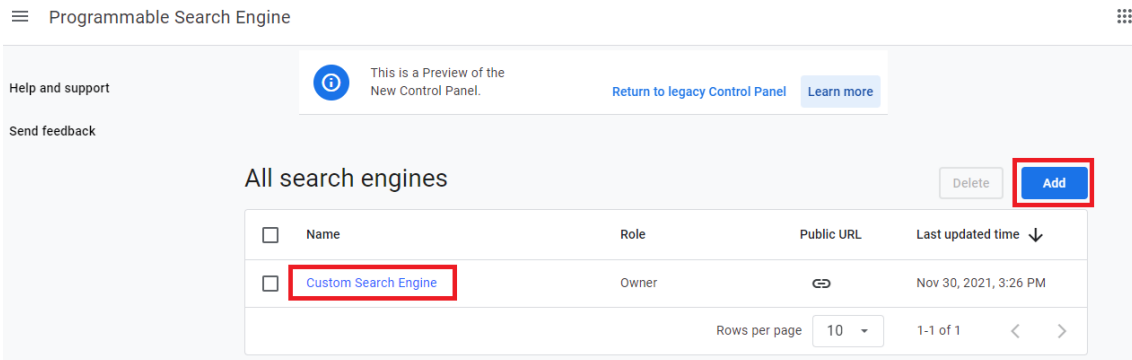


## Configure Search Engine

- To configure and obtain the Search Engine Id, from the web page that was opened by pressing the RASWin "How to Get the Key and Id" button, in the Search engine ID section click on the hyperlink "Programmable Search Engine control panel" and a Control Panel will open.



- Open or create a new search engine:





6. Add a Search Engine name and set the “Image Search” and “Search the entire web” to ON.

The screenshot shows the configuration page for a new search engine. The 'Basics' tab is active. The 'Search engine name' is 'Custom Search Engine'. The 'Image search' toggle is turned ON. The 'Search the entire web' toggle is also turned ON. The 'Sites to search' section shows 'www.google.es' added.

7. Then in the “Sites to search” section add the page that will be used for the searches, in this case “www.google.com” and press “Save”.



New search engine

Edit search engine

Custom Search

Setup

Look and feel

Search features

Statistics and Logs

Help

Visit Help Forum (Ask a question)

Send Feedback

Basics Ads Users Advanced

Provide basic details and preferences for your search engine. [Learn more](#)

Search engine name

Custom Search Engine

Search engine description

Description of search engine

Search engine keywords

Search engine keywords, e.g. climate 'global warming' 'greenhouse gases'

Edition

Standard

Get code

Search engine ID

00a65cdba84e8afd3

Copy to clipboard

Public URL

<https://cse.google.com/cse?cx=00a65cdba84e8afd3>

Image search

ON

SafeSearch

OFF

Region

All Regions

Language

Spanish

Sites to search

Add Delete Filter Label

1-1 of 1

Site

Label

Available in Site Restricted JSON API

www.google.es

Advanced

Include site individually | [Include sites in bulk](#)

www.google.com

Label

Include all pages whose address contains this URL

Include just this specific page or URL pattern I have entered

Save Cancel

8. Once this is done, Google autosaves the settings and the Search Engine configuration is ready, so copy the Search Engine Id and paste it into our RASWin configuration.

New search engine

Edit search engine

Custom Search

Setup

Look and feel

Search features

Statistics and Logs

Help

Visit Help Forum (Ask a question)

Send Feedback

Basics Ads Users Advanced

Provide basic details and preferences for your search engine. [Learn more](#)

Search engine name

Custom Search Engine

Search engine description

Description of search engine

Search engine keywords

Search engine keywords, e.g. climate 'global warming' 'greenhouse gases'

Edition

Standard

Get code

Search engine ID

Copy to clipboard

Public URL

Image search

ON

SafeSearch

OFF

Region

All Regions

Language

Spanish

Sites to search

Add Delete Filter Label

1-1 of 1

Delete Add

Last updated time

Nov 30, 2021, 3:31 PM

Get a Key

Preferences

Google API Key:

Search Engine ID:

Get the Key and Id

Cancel Ok

Once the Google API Key and Search Engine ID have been inserted in RASWin, the Google Search Image functionality will be available.