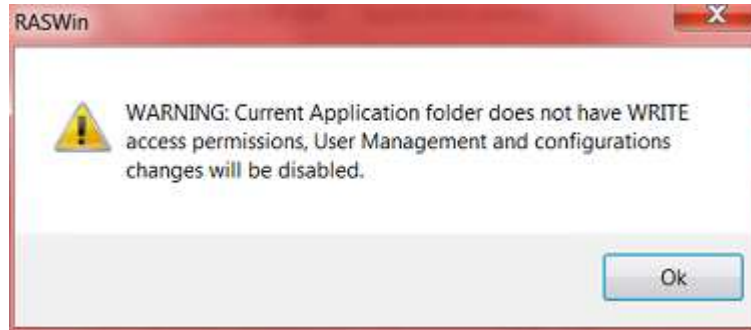




On RASWin startup, user may receive this two errors:



This error is related to folder permissions on some Windows system where user has restricted Access to folders.

It is easily solved by allowing write permissions for the user on the folder usually:

**C:\Program Files (x86)\SolidSafe**

This Microsoft site explains how to set folder permissions for folders:

[https://technet.microsoft.com/en-us/library/cc754344\(v=ws.11\).aspx](https://technet.microsoft.com/en-us/library/cc754344(v=ws.11).aspx)

**Note:** You may need Admin rights to do this operation.