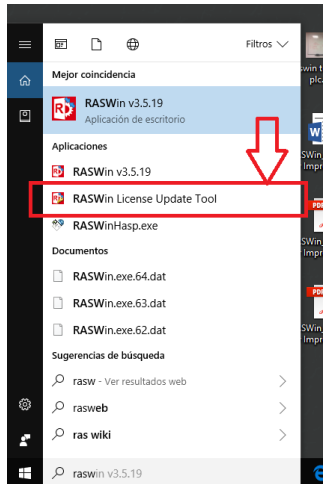




## Process to transfer your software license to another computer.

**Prerequisites:** RASWin Licensing Tool RASWinHasp.exe. Could be found on RTE folder where RASWin is installed, a shortcut to it is also present in the RASWin application menu from Windows.



It also could be downloaded from:

<http://www.raswin.eu/raswinupdates/RASWinHasp.zip>

Before transferring the license you must install our vendor runtime RTE or RASWin software in both source and destination machines:

If you are moving the license from server to server and you don't have RASWin, the RTE could be downloaded from:

<http://www.raswin.eu/raswinupdates/VendorRTE.zip>

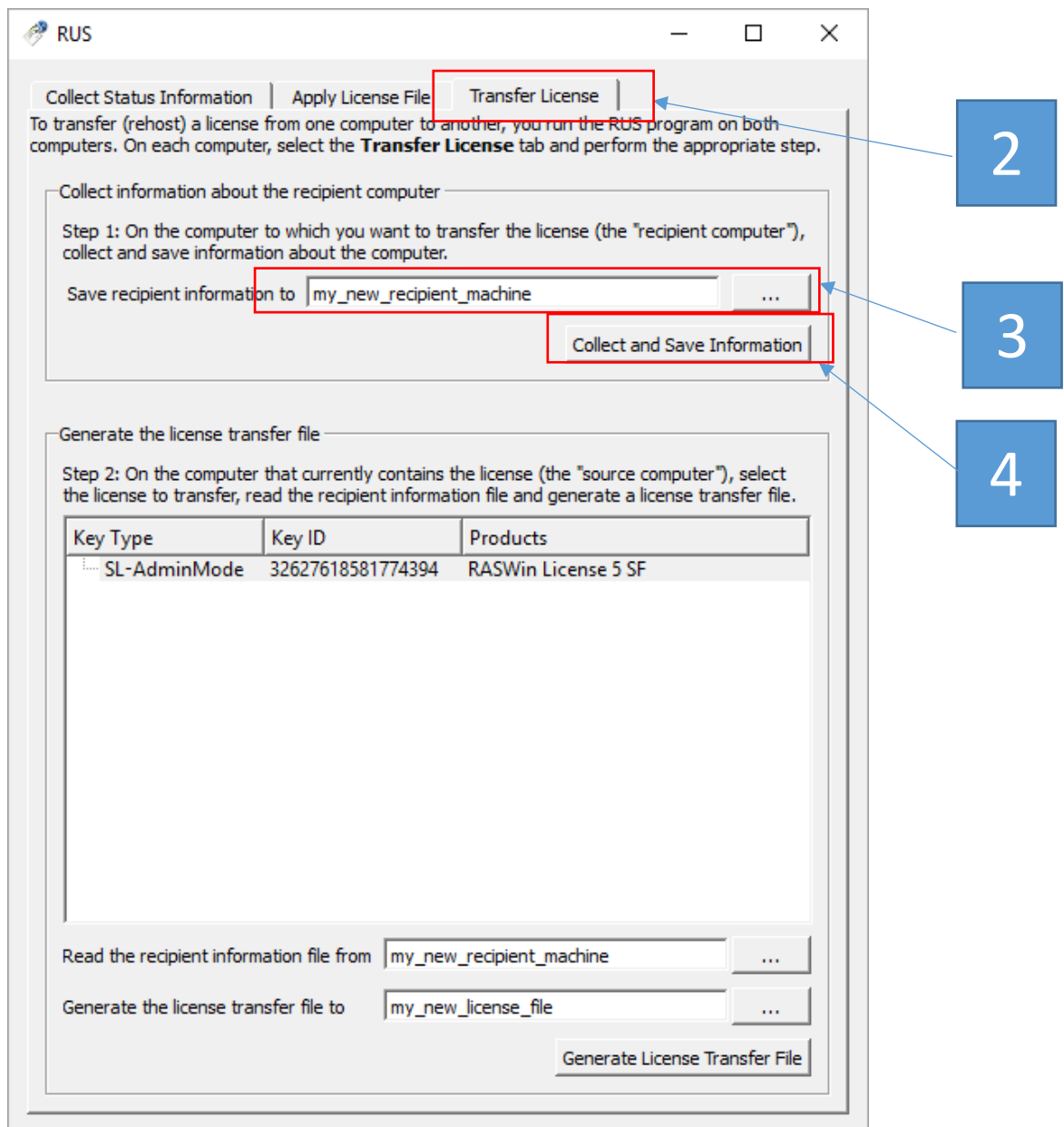
Instructions to install the RTE for servers could be found on **RASWin Technical Note Number 003**.

**Note:** Licenses could only be moved locally, if you want to move a license that you are running from a server you can not perform this procedure from the remote client.

Vendor RTE or RASWin must be installed on both computers, source and destination.

## On the Machine that is not currently licensed for RASWin

- 1) Execute tool **RASWinHasp.exe** in the machine you want to transfer the license.
- 2) In the dialog select tab **Transfer License**
- 3) Select a destination file name for your recipient machine by entering a name or clicking the [...] button.
- 4) Press button **Collect and Save Information**. This will generate a .ld file that you should copy to the machine where you've the active license



## On the Machine that is currently licensed for RASWin

- 5) Go to the machine that currently has the license and also execute **RASWinHasp.exe** tool.
- 6) In the dialog select tab **Transfer License**, were on Step 2.
- 7) Load the recipient computer collected data file by clicking in the button [...] near the button "**Read the recipient information file from**".
- 8) Give a new name to your new license data or browse your machine for where to put the new license file.
- 9) Click the **Generate License Transfer File**, a h2h file is generated.



RUS

Collect Status Information | Apply License File | **Transfer License**

To transfer (rehost) a license from one computer to another, you run the RUS program on both computers. On each computer, select the **Transfer License** tab and perform the appropriate step.

Collect information about the recipient computer

Step 1: On the computer to which you want to transfer the license (the "recipient computer"), collect and save information about the computer.

Save recipient information to  ...

Collect and Save Information

Generate the license transfer file

Step 2: On the computer that currently contains the license (the "source computer"), select the license to transfer, read the recipient information file and generate a license transfer file.

Key Type	Key ID	Products
SL-AdminMode	32627618581774394	RASWin License 5 SF

Read the recipient information file from  ...

Generate the license transfer file to  ...

Generate License Transfer File

7

8

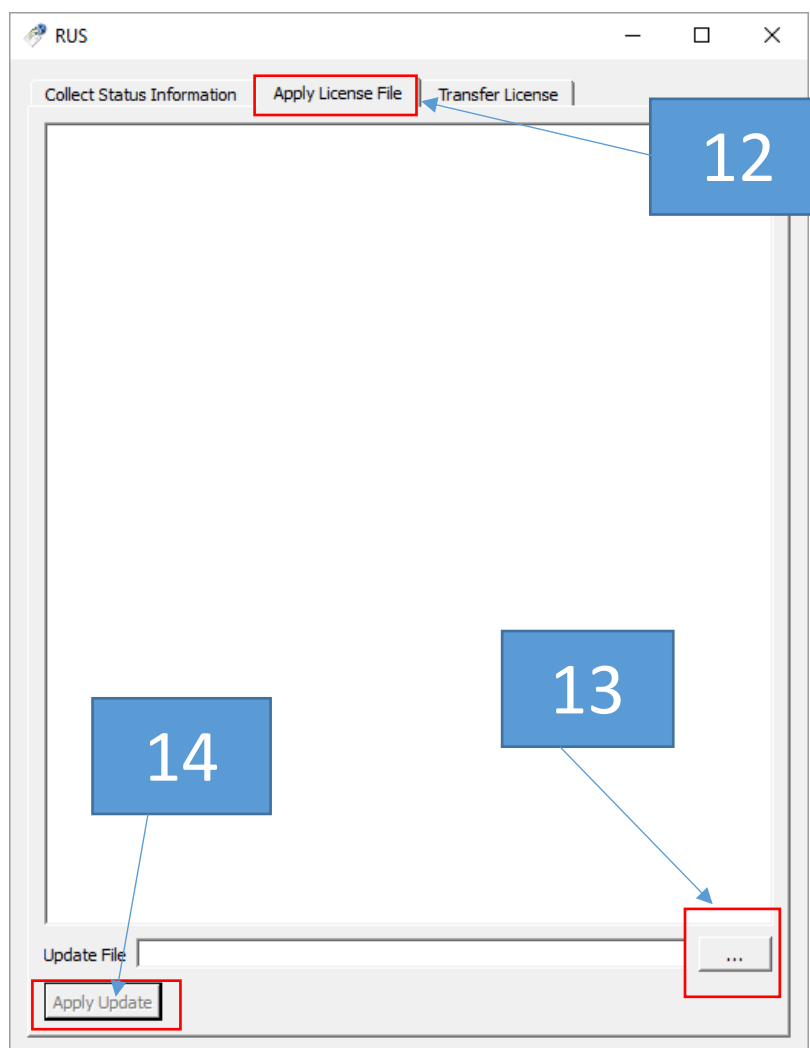
9

- 10) Your new license file (h2h) will be generated, copy it to the machine which is not currently licensed for RASWin.



## On the Machine that is not currently licensed for RASWin

- 11) Execute tool **RASWinHasp.exe**
- 12) In the dialog select tab **Apply License File**.
- 13) In the bottom of the dialog press the browse file button [...] and locate the newly generated h2h file.
- 14) Click **Apply Update**.



After that your license should be installed and you can run RASWin normally.