

# RASWIN Module SRS Create an ESD Catalog



## Embedded Safety Device



The ESD elements in RASWin, represents all those more complex electronic equipment, which have embedded safety functions, for example new ServoDrives, Collaborative robots, etc.

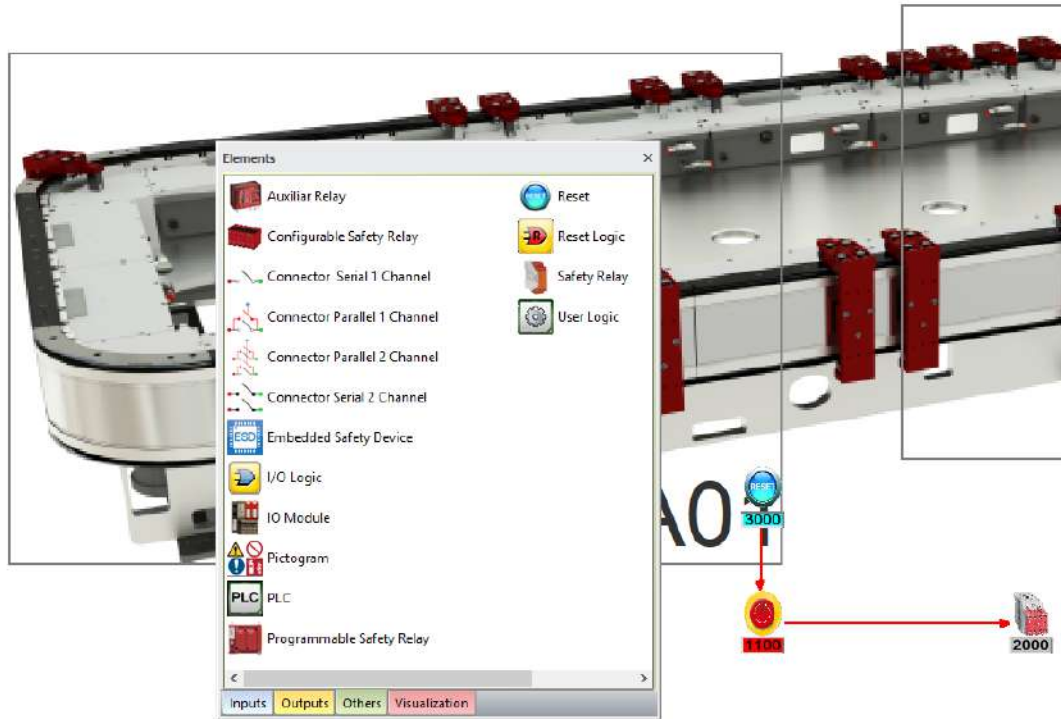
The different Safety Functions Embedded on the device, will have a safety parameters as PL, Category and PFHd.

Also this devices can incorporate many safety inputs or safety outputs.

# How to create a Catalog of ESD elements?

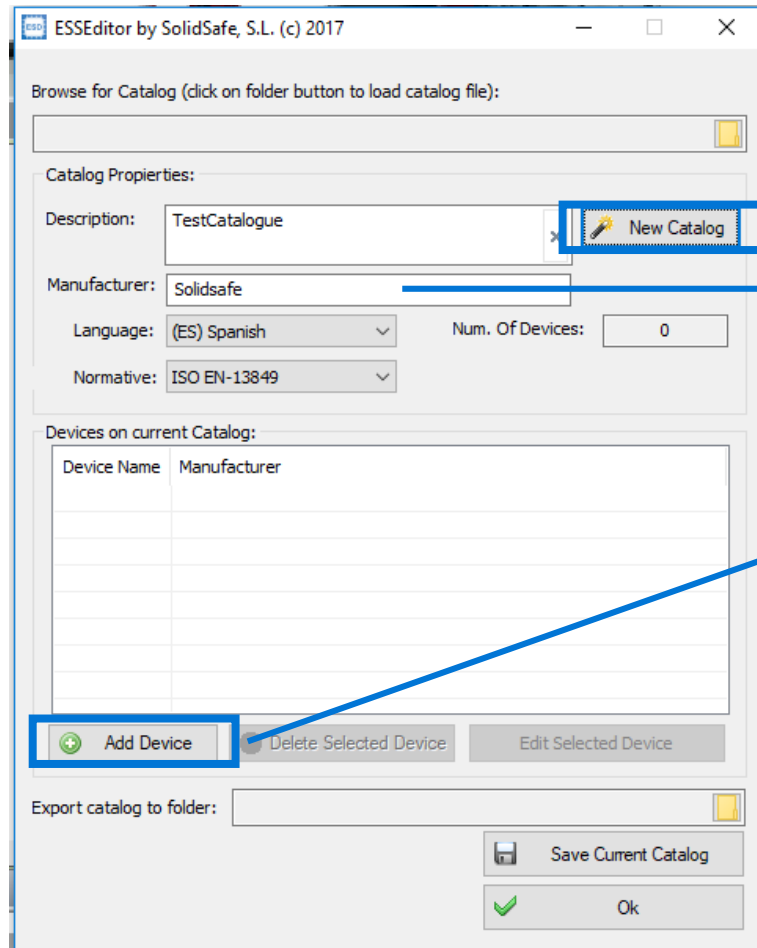


Click on ESD Catalog Editor



Step 1: Open the ESD Catalog Editor

# How to create a Catalog of ESD elements?



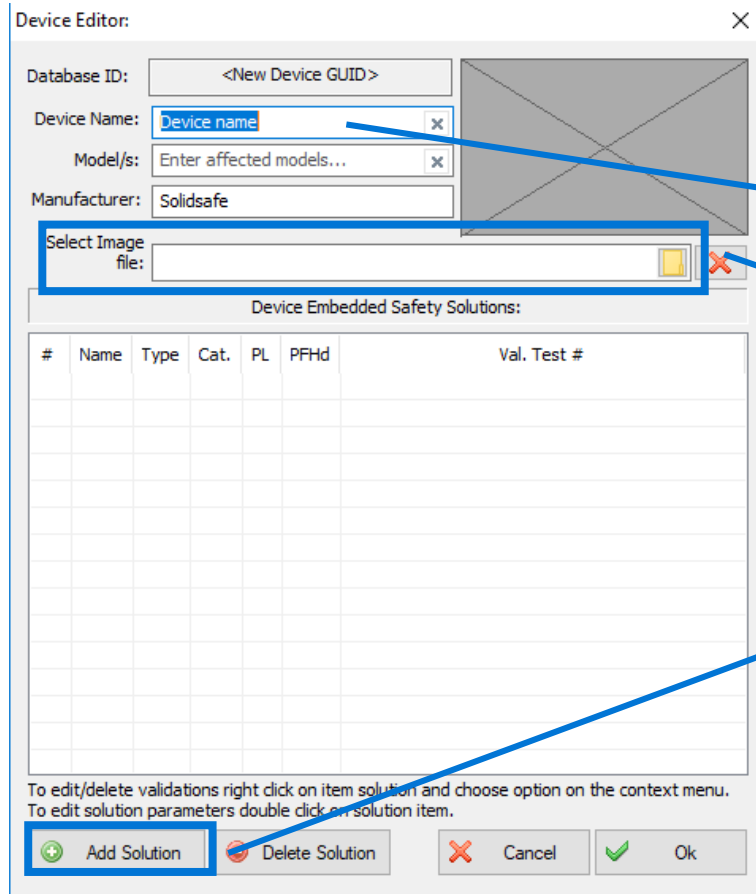
1. Click on "New Catalog".

2. Complete the following information:

Description (Catalogue Name)  
Manufacturer

3. Add the name of the devices that will be in the catalogue by clicking on "Add device".

# How to create a Catalog of ESD elements?



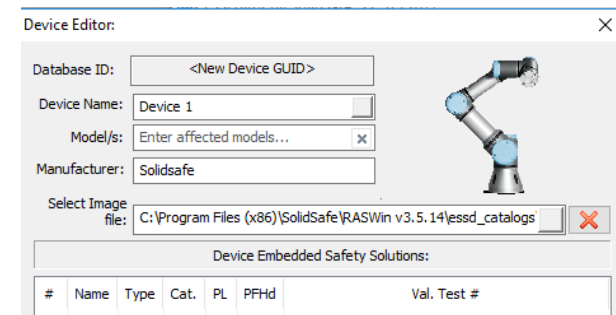
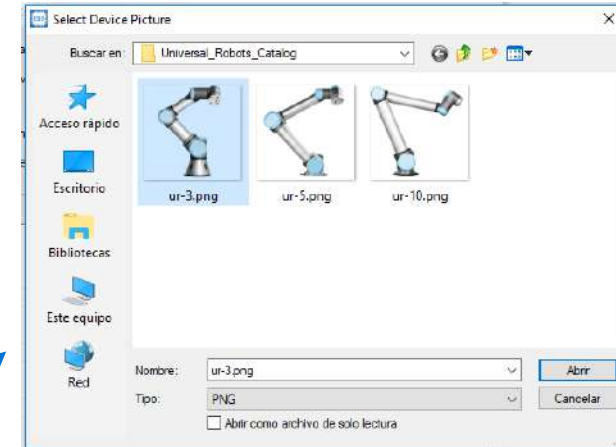
1. Fill the information of the device.

2. Click on "Select image file"

3. Select the image of the device.

4. The image will appear on upper-right corner.

5. Click on Add Solution



# How to create a Catalog of ESD elements?

Embedded Safety Solution Editor

Solution Type:  
 Input  Output  Safety Function

Name: Solution Name

Description and additional info:

Performance Level (PL): d Category: B PFHd: 0

Add Param Delete P... Delete All Cancel Ok

1. Select “Input” Solution Type.
2. Complete the name and the description of the Solution.
3. Add the Safety Values of the Solution (it must be provided by the manufacturer).
4. Click “Ok”.

Step 4: Adding the Safety inputs of the device

# How to create a Catalog of ESD elements?

Embedded Safety Solution Editor

Solution Type:  
 Input  Output  Safety Function

Name: Safety Output

Description and additional info: A Safety Output that can be used as condition to stop the another device

Performance Level (PL): d Category: 3 PFHd: 2.01e-07

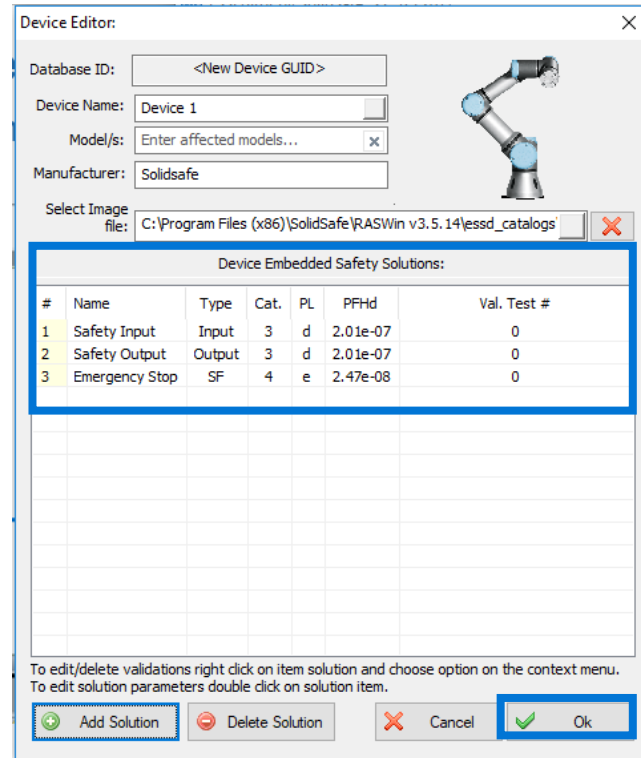
Add Param Delete P... Delete All Cancel Ok

1. Select “Output” Solution Type.
2. Complete the name and the description of the Solution.
3. Add the Safety Values of the Solution (it must be provided by the manufacturer).
4. Click “Ok”.



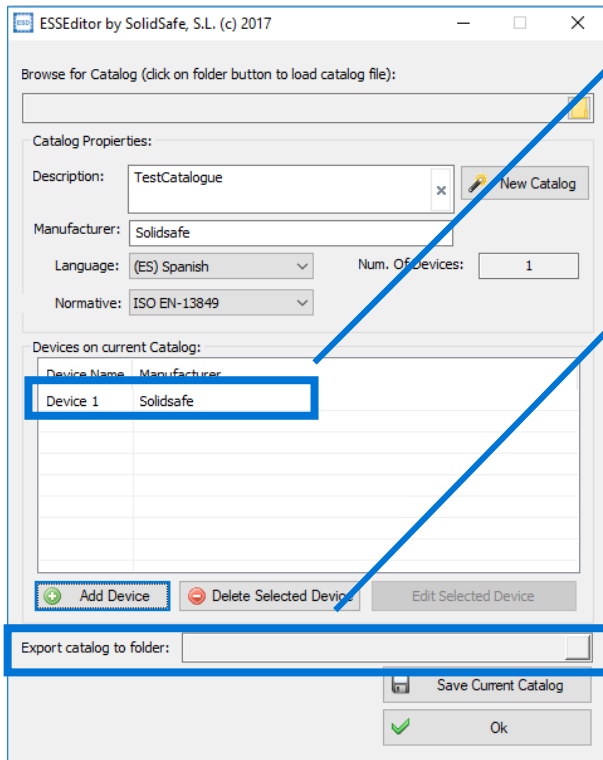


# How to create a Catalog of ESD elements?

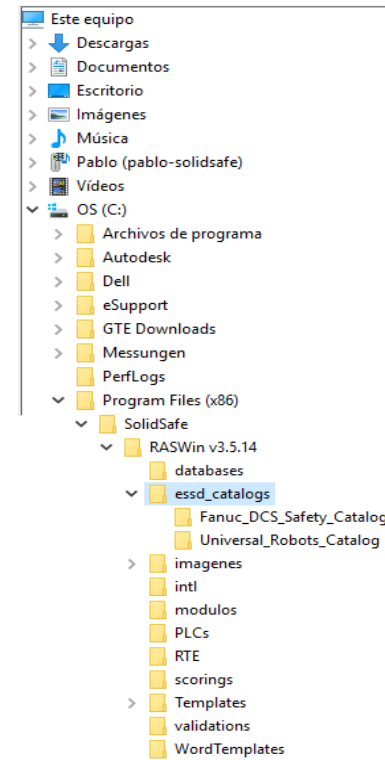


1. Once all the Safety Inputs, Safety Outputs and Safety functions of the device has been created, will appear on the "Device Embedded Safety Solution window.
2. Click "Ok".

# How to create a Catalog of ESD elements?



1. The device has been created.
2. If there are more devices on your catalog, repeat the same procedure for each one.
3. To add your catalog to your Raswin Catalog database, select “Export Catalog to folder”.
4. Export the catalog on the following path:  
*C:\Program Files (x86)\SolidSafe\RASWin v3.5.14\essd\_catalogs*



# Previous Presentation

RASWIN Module SRS  
Scanner + Multiple Outputs

[SOLIDSsafe]



[SOLIDSsafe]

