

# RASWIN Module SRS Scanner + Multiple Outputs

# Previous knowledge requirements

## SRS Module

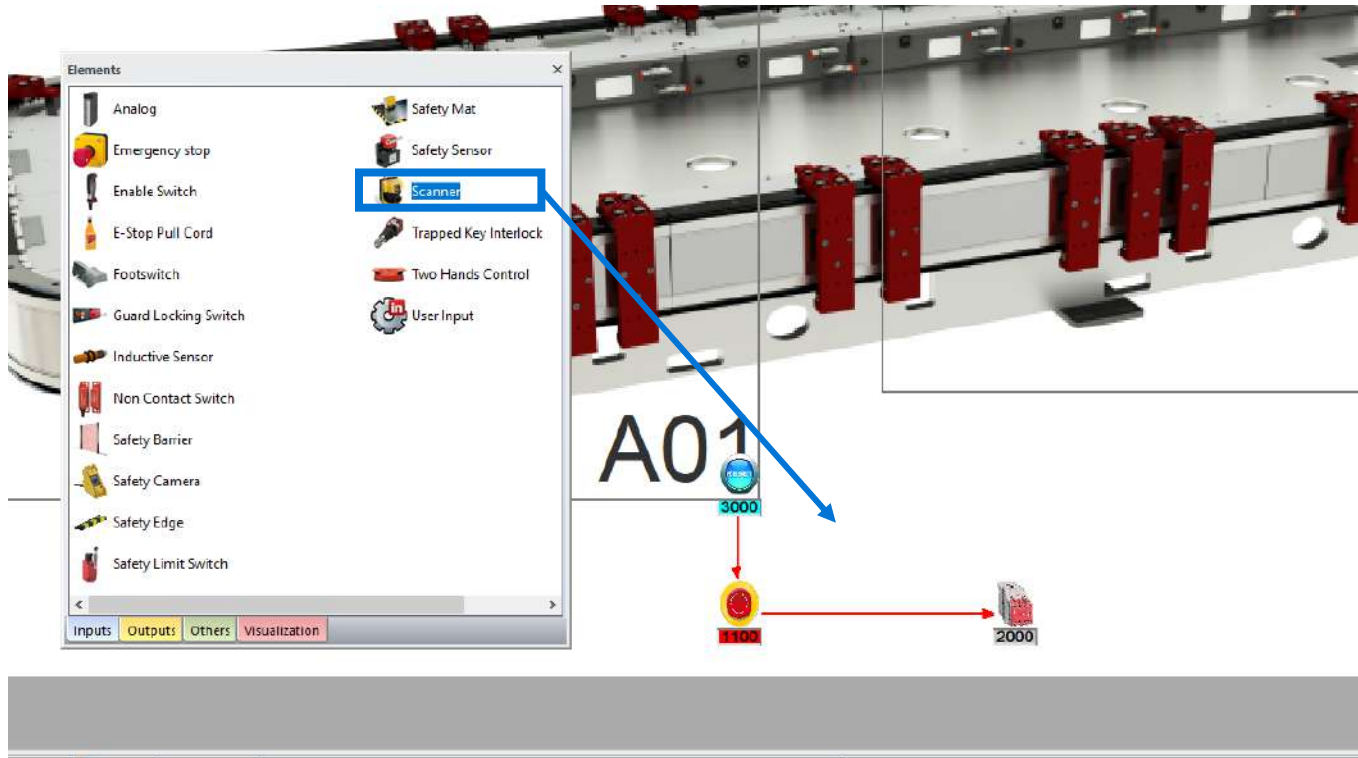
1\_SRS Input\_Output



Previous knowledge requirements

# How to create a Safety Matrix in RASWin?

## Architecture: Scanner + Multiple Outputs



1. Select "Inputs" on the Element Pane.
2. Add a Scanner to the layout.

Step 1: Add a Scanner

# How to create a Safety Matrix in RASWin?

## Architecture: Scanner + Multiple Outputs

Element information:

Matrix Code: 1350 1350 - 1399

User Code: SC1

Description: Horizontal Scanner

Manufacturer: Rockwell Automation

Reference: XXX-XXXX Accessories

Location: Operator Station 1

Access Point: <Not assigned>

Label color:    Exclude from Matrix

Auto reset   PLC

Validations and configuration:

PLC Configuration Validation configuration

Additional Information

Detection Fields

Edit links Cancel Ok

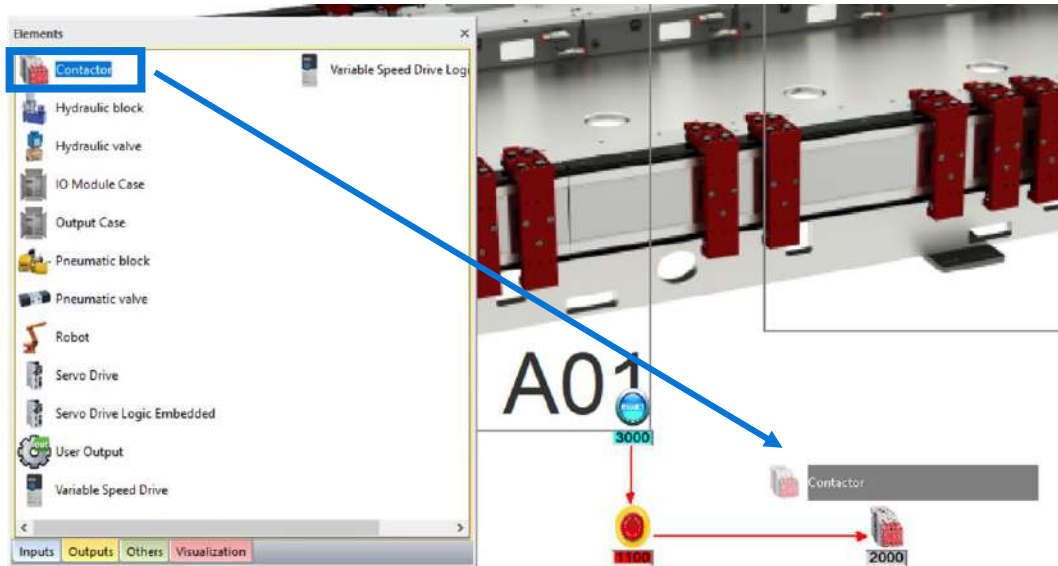
1. Complete the following information:

Description  
Manufacturer  
Reference  
Location

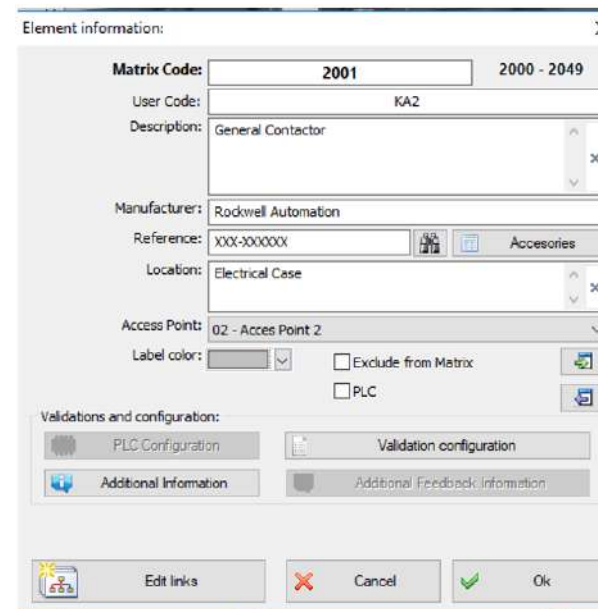
Step 2: Fill the Scanner information

# How to create a Safety Matrix in RASWin?

## Architecture: Scanner + Multiple Outputs



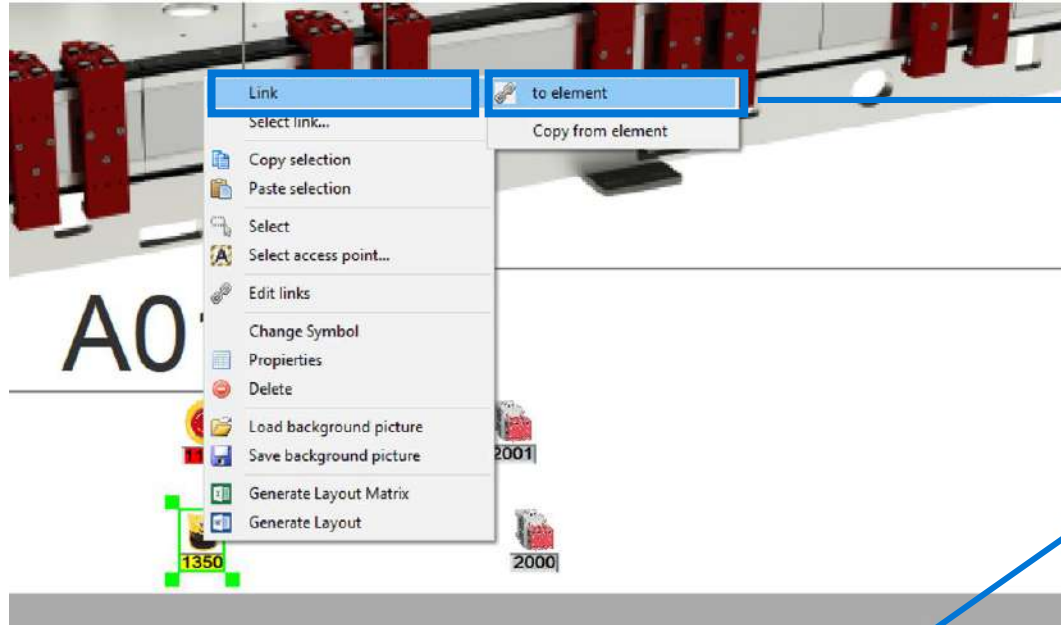
1. Select "Output" on the Element Pane.
2. Add another Contactor to the layout.
3. Fill the Contactor Information.



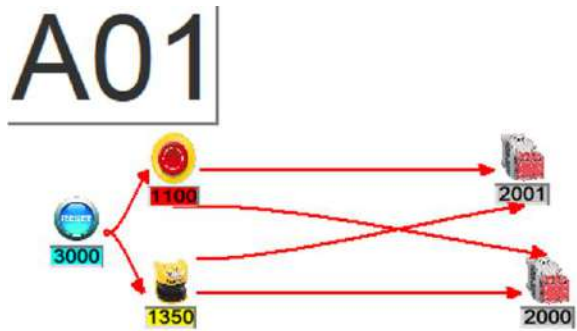
Step 3: Add another contactor and fill its information

# How to create a Safety Matrix in RASWin?

## Architecture: Scanner + Multiple Outputs



1. Link the Scanner with both contactors, and the reset.
2. Link the Estop with both contactors and the rest.
3. The links will be displayed in red color.
4. Press "Esc" button or right mouse button to stop link.



# How to create a Safety Matrix in RASWin?

## Architecture: Scanner + Multiple Outputs



Note: There are applications where the multiple detection fields of the scanner are used to stop different movements.

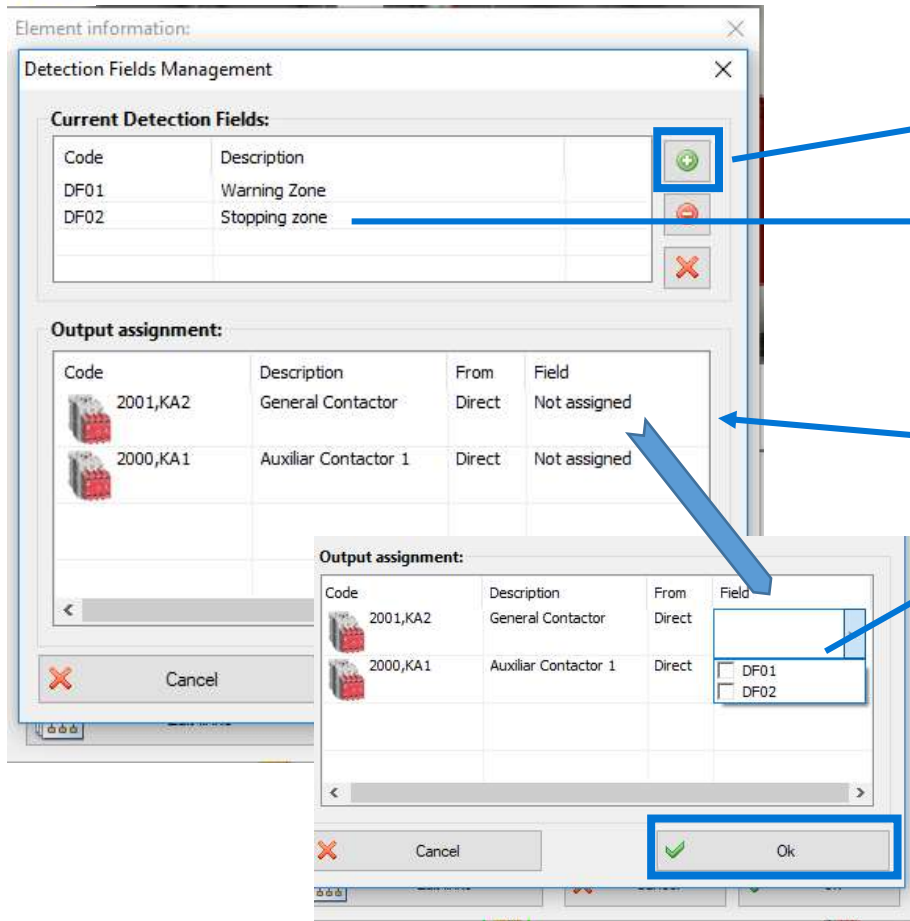
To create multiple detection fields (When required):

1. Double click on the Scanner.
2. Select "Detection Fields".



# How to create a Safety Matrix in RASWin?

## Architecture: Scanner + Multiple Outputs



To add multiple detection fields:

1. Click on the “Add icon” to create a detection field.
2. Add a description of the detection field.
3. Create another detection field with the same procedure.

To assign the detection fields to each Output:

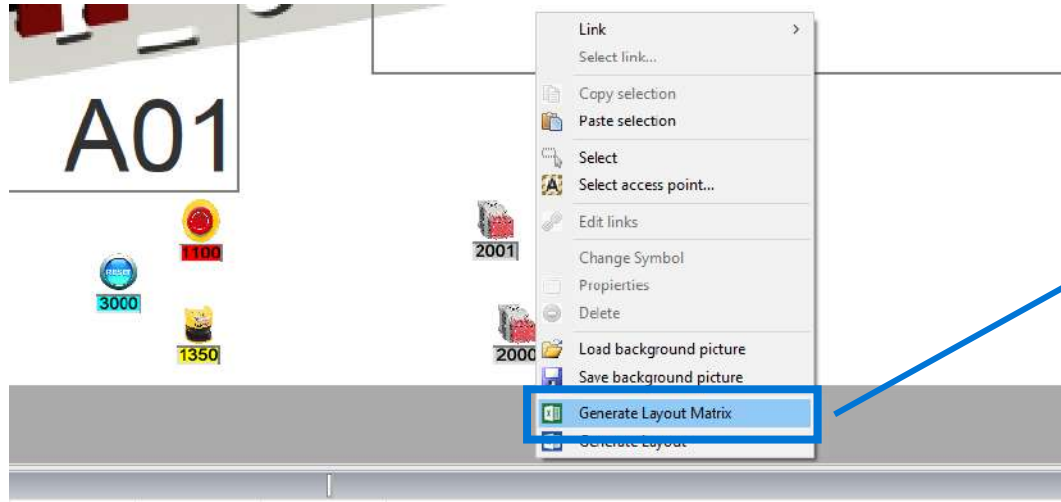
4. Double click on column “Field” of General Contactor.
5. Select the field/s that will stop the movement of General Contactor.
- 6 Repeat the procedure for the Contactor 1.
7. Select “Ok” on the Detection Fields Management window.
8. Select “Ok” on the Element information window.

Step 5: Create and assign multiple detection fields (Optional)

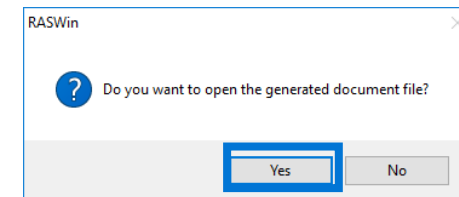
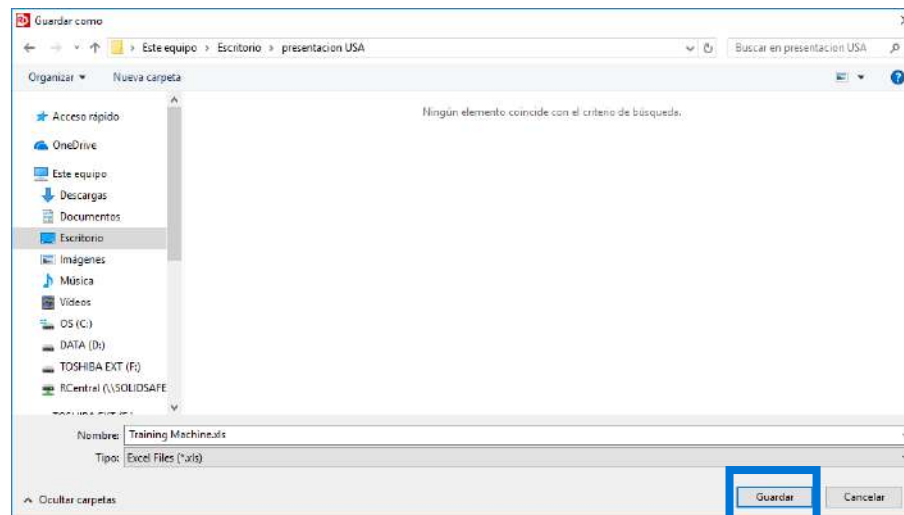


# How to create a Safety Matrix in RASWin?

Architecture: Scanner + Multiple Outputs



1. Right click anywhere on the layout.
2. Select “Generate Layout Matrix”.
3. Save the Matrix.
4. And click “Yes”, to open the Safety Matrix.



# How to create a Safety Matrix in RASWin?

## Architecture: Scanner + Multiple Outputs

SAFETY MATRIX					
CODE	INPUT ELEMENT DESCRIPTION	USER CODE	OUTPUT ELEMENTS DESCRIPTION		RESET
			Acces Point 2		
			Auxiliar Contactor 1	General Contactor	
			2000	2001	
1100	Central Estop	PBE-1	OFF	OFF	R3000
1350	Horizontal Scanner	SC1	OFF (1350.2000.DF01)	OFF (1350.2001.DF02)	R3000
DETECTION FIELD DEVICES					
1350,SC1	DF01 - Warning Zone				
	DF02 - Stopping zone				

Once the file is opened, the following safety matrix will appear .

## Previous Presentation

RASWIN Module SRS  
Input + Safety PLC +Output Mapping

[SOLIDSsafe]



## Next Presentation

RASWIN Module SRS  
Create an ESD Catalog

[SOLIDSsafe]

