



# RASWIN Module SRS

## Input + Configurable Safety Relay + Output

# Previous knowledge requirements

## SRS Module

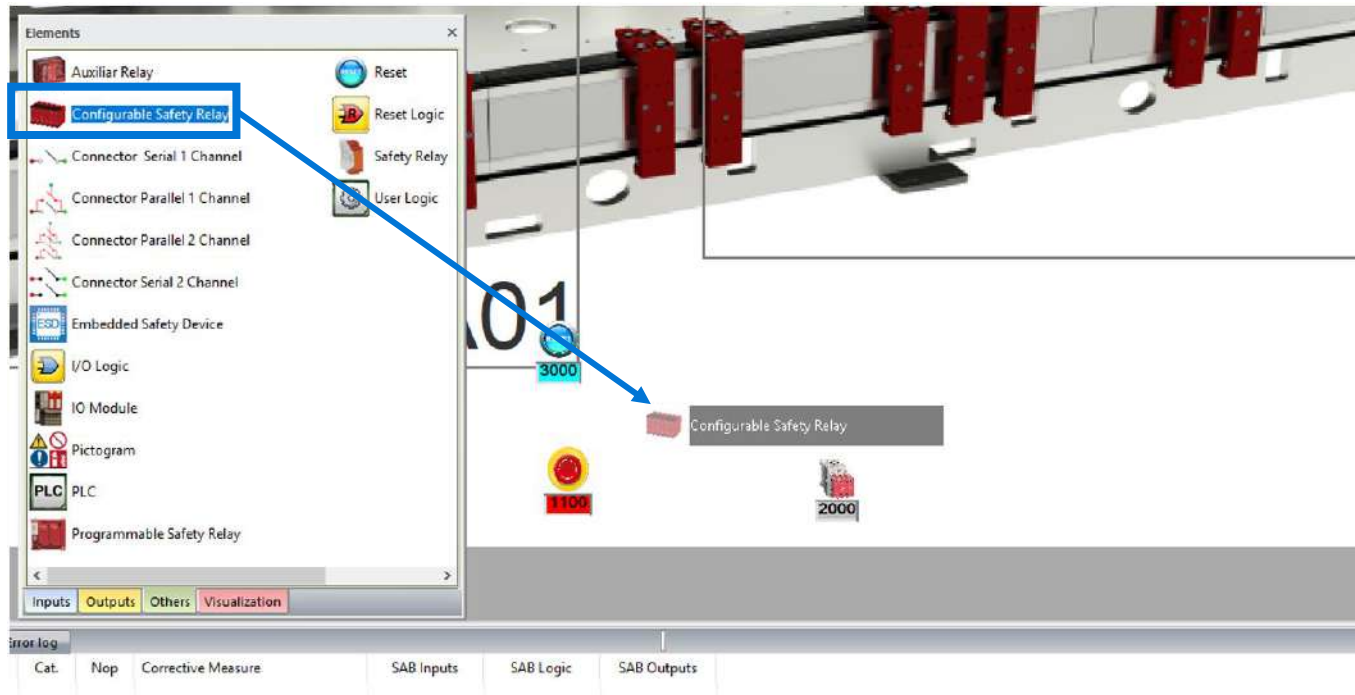
1\_SRS Input\_Output



Previous knowledge requirements

# How to create a Safety Matrix in RASWin?

Architecture: Input + Configurable Safety Relay + Output



1. Select “Others” on the Element Pane.

2. Select a “Configurable Safety Relay” and drag it on the layout.

Step 1: Add a Configurable Safety Relay

Copyright 2017, Solidsafe S.L. INC. All Rights Reserved

# How to create a Safety Matrix in RASWin?

Architecture: Input + Configurable Safety Relay + Output

Safety Relay Information

Matrix Code: 4500

User Code: A-2

Description: Configurable Safety Relay

Manufacturer: Rockwell Automation

Reference: XXX-XXXX

Location: Control Cabinet

Access Point: <Not assigned>

Label color:  Exclude from Matrix

Manufacturer's parameters:

Input parameters:

Parame...	Description	Value

Output parameters:

Parame...	Description	Value

Connected elements:

Inputs Outputs

Validation configuration

Cancel Ok

1. Complete the following information:

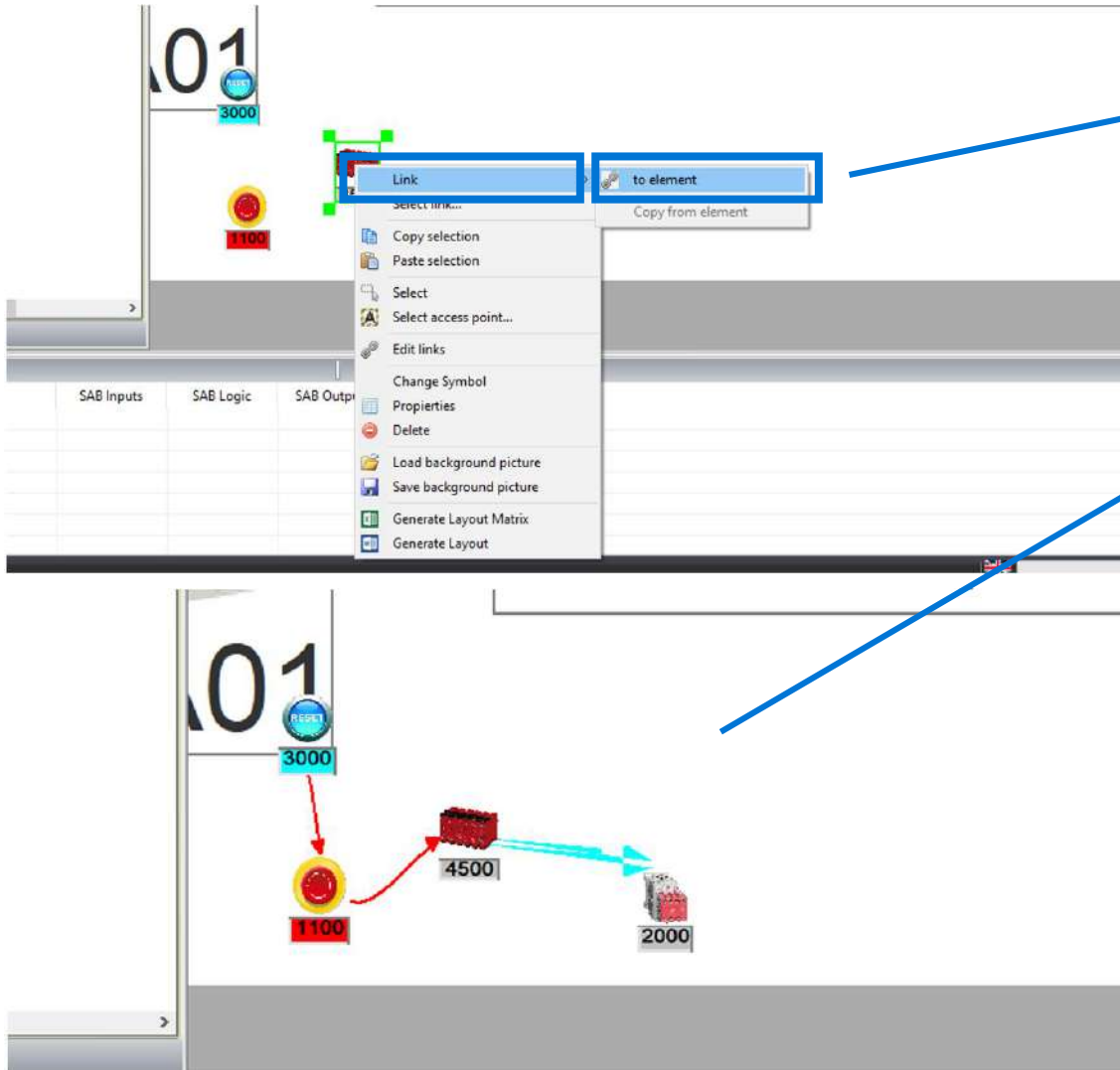
Description  
Manufacturer  
Reference  
Location

2. Click Ok

Step 2: Fill Configurable Safety Relay information

# How to create a Safety Matrix in RASWin?

## Architecture: Input + Configurable Safety Relay + Output

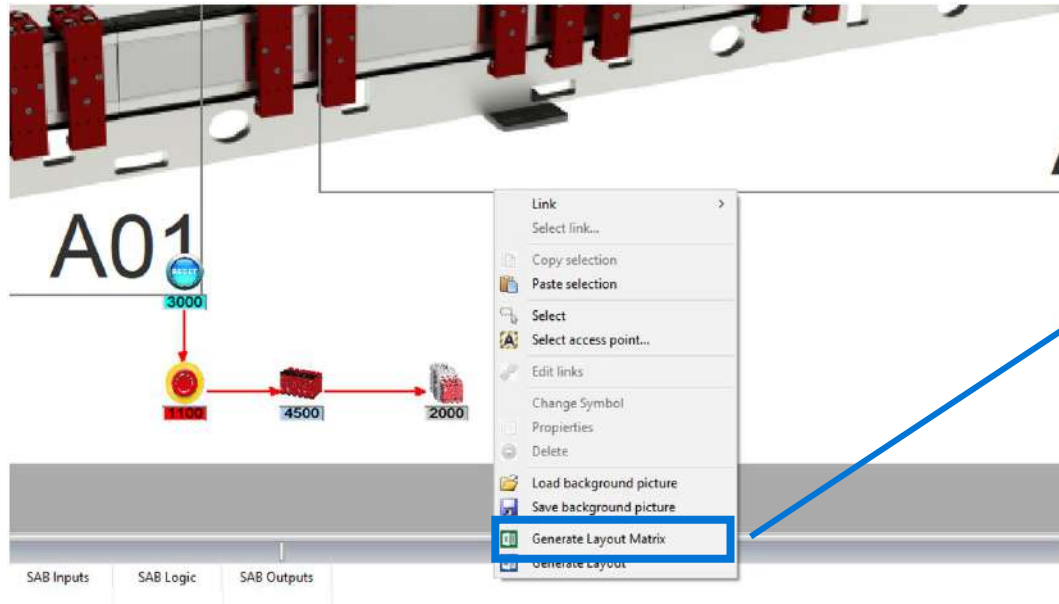


1. Select the “Configurable Safety Relay”, and right click.
2. Click “link”.
3. Click “to element” (the mouse cursor will change to a cross).
4. Link it with the inputs and the outputs.
5. The links will be displayed in red color.
6. Press “Esc” button or right mouse button to stop link.
7. Link the Reset with the Input element.

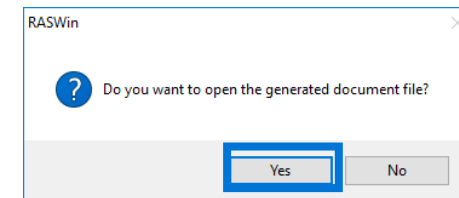
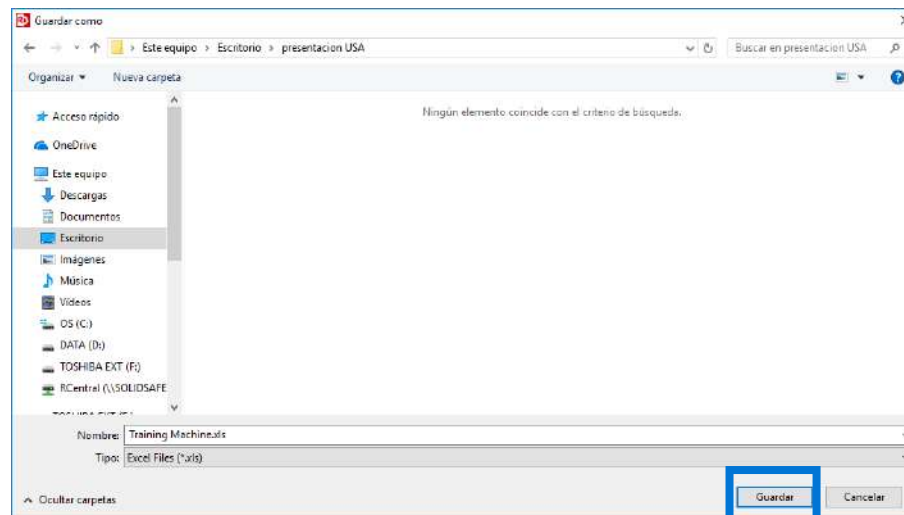
Step 3: Link the elements

# How to create a Safety Matrix in RASWin?

Architecture: Input + Configurable Safety Relay + Output



1. Right click anywhere on the layout.
2. Select *“Generate Layout Matrix”*.
3. Save the Matrix.
4. And click *“Yes”*, to open the Safety Matrix.



# How to create a Safety Matrix in RASWin?

Architecture: Input + Configurable Safety Relay + Output

Once the file is opened, the following safety matrix will appear .


B	C	D	E	F	G
<b>SAFETY MATRIX</b>					
CODE	INPUT ELEMENT DESCRIPTION	USER CODE	OUTPUT	RESET	
			Acces Point 2		
			Auxiliar contactor 1		
			2000		
			KA1		
1100	Central EStop	PBE-1	OFF	R3000	

## Previous Presentation

Copyright 2017, Solidsafe S.L. INC. All Rights Reserved

RASWIN Module SRS  
Input + Safety Relay + Output

[SOLIDSsafe]



## Next Presentation

Copyright 2017, Solidsafe S.L. INC. All Rights Reserved

RASWIN Module SRS  
Input + Programmable Safety Relay + Output

[SOLIDSsafe]

