

RASWIN Module SRS Input + Safety Relay + Output

Previous knowledge requirements

SRS Module

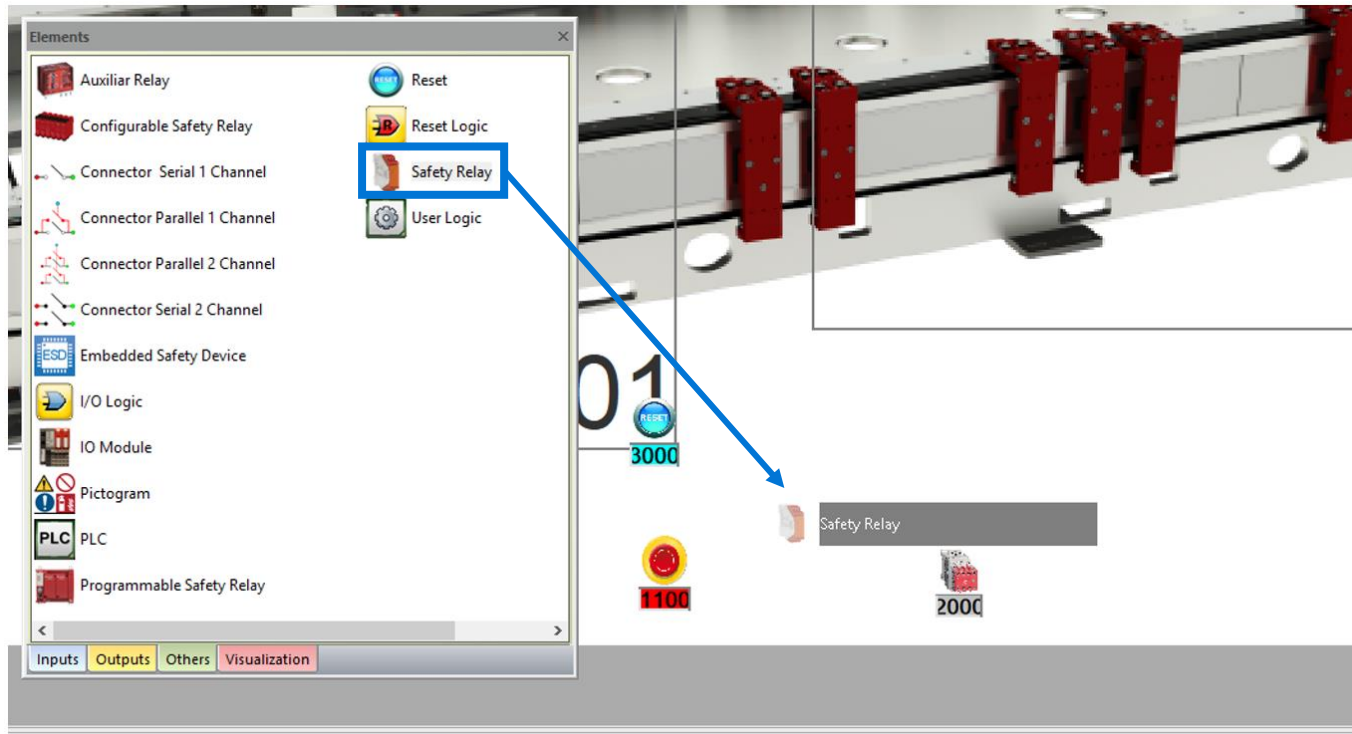
1_SRS Input_Output



Previous knowledge requirements

How to create a Safety Matrix in RASWin?

Architecture: Input + Safety Relay + Output



1. Select "Others" on the Element Pane.
2. Select a "Safety Relay" and drag it on the layout.

Step 1: Add a Safety Relay

How to create a Safety Matrix in RASWin?

Architecture: Input + Safety Relay + Output

Safety Relay Information

Matrix Code: 2350

User Code: U-123

Description: Estop Safety Relay

Manufacturer: Rockwell Automation

Reference: MSR_XXX

Location: Control Cabinet

Access Point: 01 - Acces Point 1

Label color: [Color Selection] Exclude from Matrix

Manufacturer's parameters:

Input parameters:

Parame...	Description	Value

Output parameters:

Parame...	Description	Value

Connected elements:

Inputs Outputs

Validation configuration

Cancel Ok

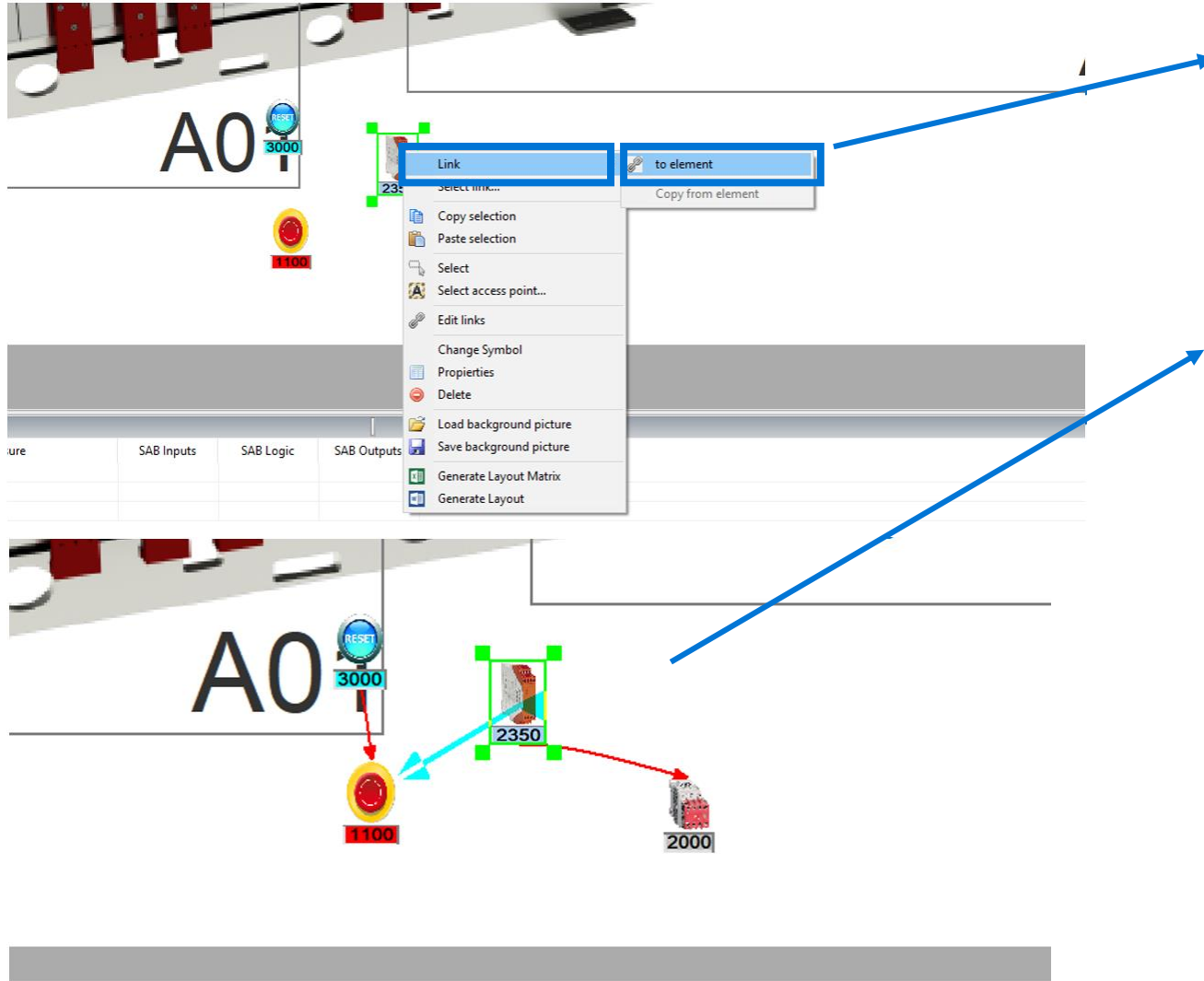
1. Complete the following information:

- Description
- Manufacturer
- Reference
- Location

2. Click Ok

How to create a Safety Matrix in RASWin?

Architecture: Input + Safety Relay + Output

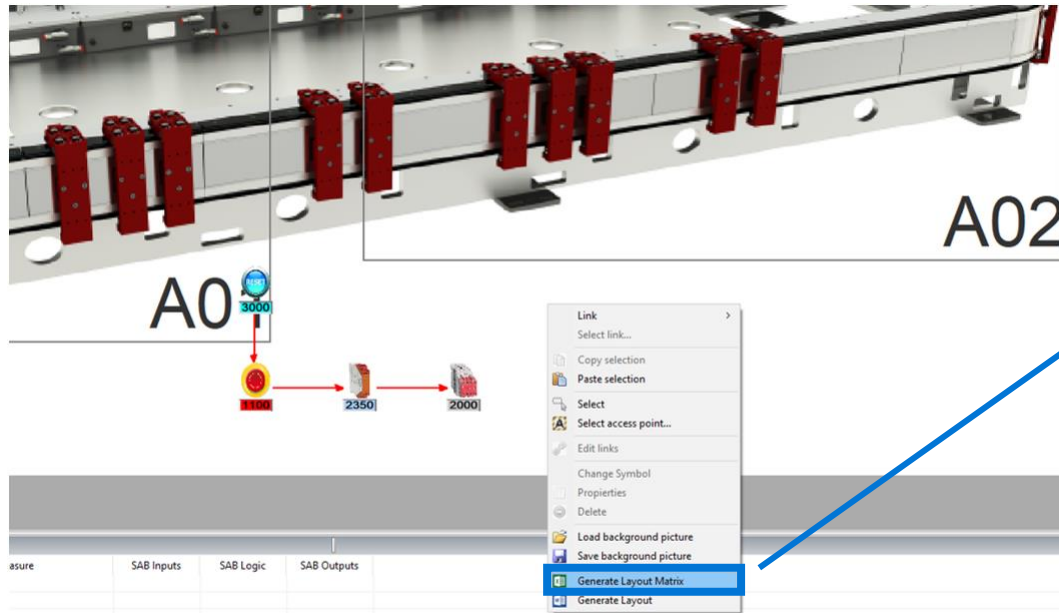


1. Select the Safety Relay, and right click.
2. Click “link”.
3. Click “to element” (the mouse cursor will change to a cross).
4. Link it with the inputs and the outputs.
5. The links will be displayed in red color.
6. Press “Esc” button or right mouse button to stop link.
7. Link the Reset with the EStop

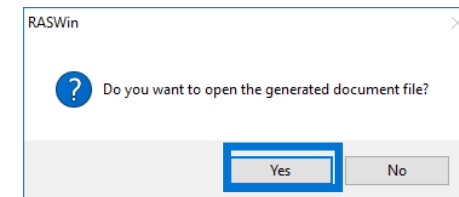
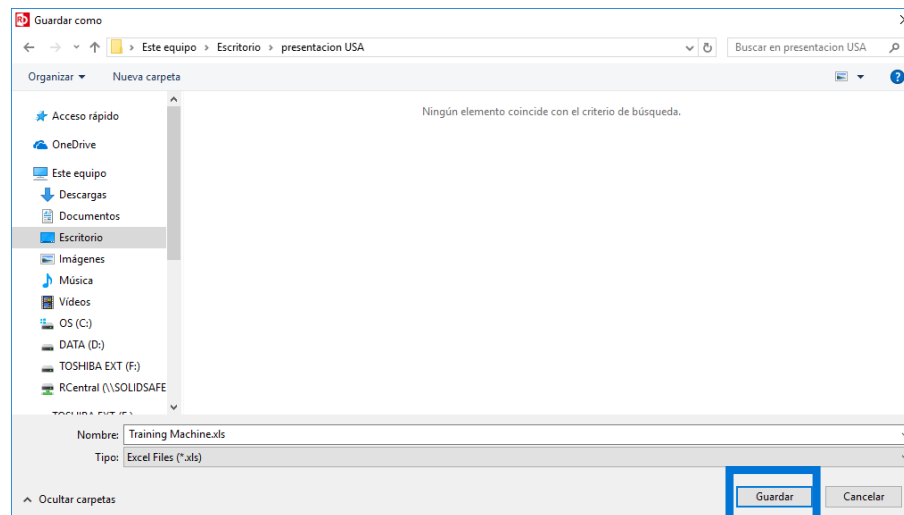
Step 3: Link the elements

How to create a Safety Matrix in RASWin?

Architecture: Input + Safety Relay + Output



1. Right click anywhere on the layout.
2. Select “Generate Layout Matrix”.
3. Save the Matrix.
4. And click “Yes”, to open the Safety Matrix.



How to create a Safety Matrix in RASWin?

Architecture: Input + Safety Relay + Output

Once the file is opened, the following safety matrix will appear .


	B	C	D	E	F	G
SAFETY MATRIX						
CODE	INPUT ELEMENT DESCRIPTION	USER CODE	OUTPUT	RESET		
			Acces Point 2			
			Auxiliar contactor 1			
			2000			
			KA1			
1100	Central EStop	PBE-1	OFF		R3000	

Previous Presentation

Copyright 2017, Solidsafe S.L. INC. All Rights Reserved

RASWIN Module SRS
Input + Output

[SOLIDSsafe]



Next Presentation

Copyright 2017, Solidsafe S.L. INC. All Rights Reserved

RASWIN Module SRS
Input + Configurable Safety Relay + Output

[SOLIDSsafe]

